

## BAFTA

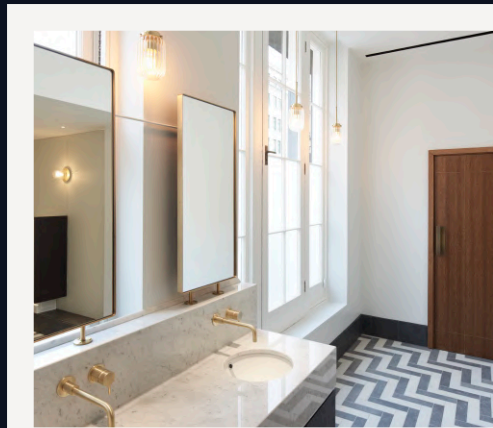
### CULTURAL

**Client:** South Coast Stone

**Architect:** Benedetti Architects

**Year of completion:** 2021

**Location:** London, UK



*Materials: Bianco Carrara, Verde Guatemala, Bordeaux Rosso Lepanto, Travertino Classico.*

*Thickness: 2 cm*

*Size: CTS*

*Quantity: Approx. 300 m<sup>2</sup>*

For BAFTA, the iconic London venue of the British Academy of Film & Television Arts, in Piccadilly, London, MGI Group supplied Guatemala Green marble for the bar counter on the 3rd floor and Lepanto Red Bordeaux for the lobby counter on the 4th floor. Both materials were also used for the vanity tops. Strong and intense colors, shades of deep green and deep purplish red with light inclusions contrast with the neutral walls in Travertino Classico. Stones suitable for interior cladding that give an Italian touch. Other washbasin tops are made of Bianco Carrara Marble extracted directly from the owned quarries in the Apuan Alps.

